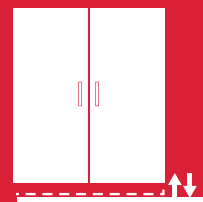
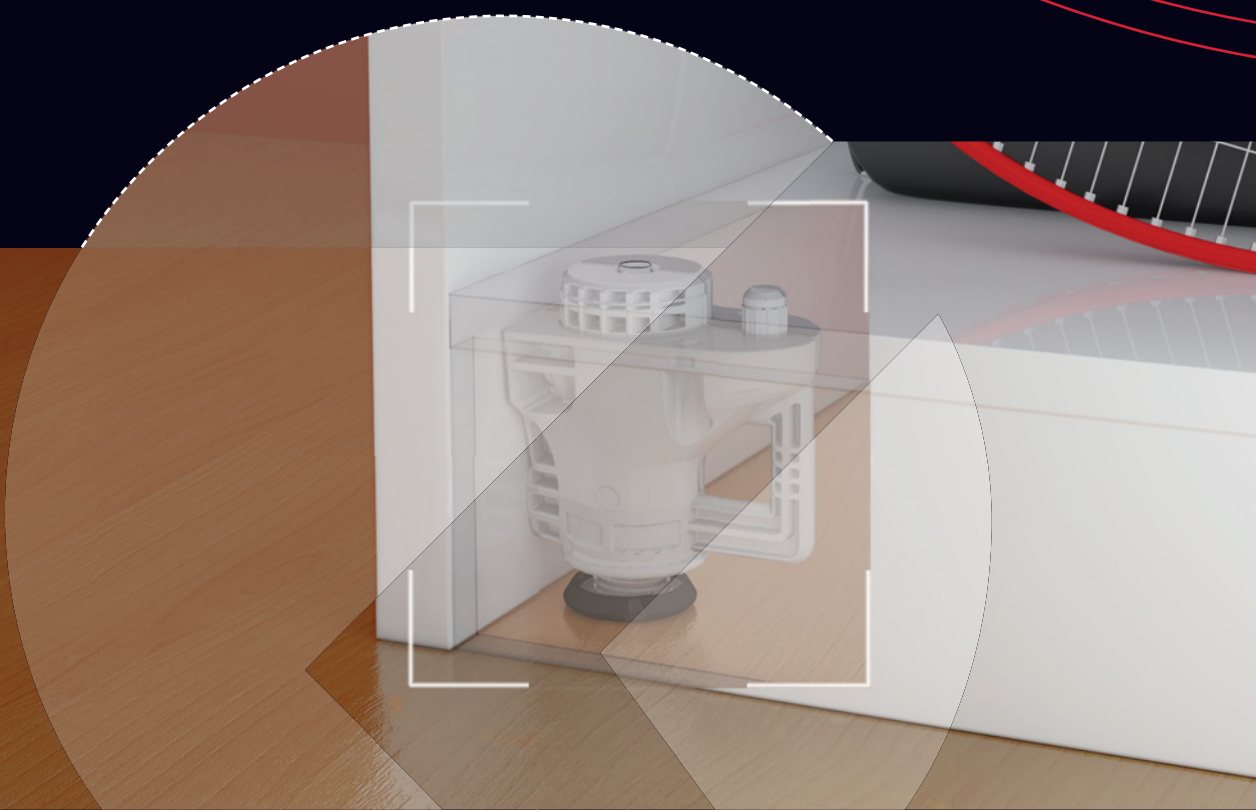


ATACAMA J



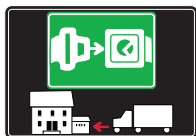
LEVELLERS





SYMBOLS AND FINISHES LEGEND

SYMBOLS



= SHELF SAFELY LOCKED DURING TRANSPORTATION AND AT HOME.



= ANTI-TURNOVER LOCKING SYSTEM



= NORMS / PATENTS



= PHILLIPS / POZIDRIV



= NEWTON



= PART.NO



= HEXAGONAL SOCKET



= FRICTION



= PCS. PER PACKAGE



= BLADE SLOT



= AUTOMATIC



= COMBI SLOT



= DROP DOWN



= CAPACITY LOADING



= COUNTERSUNK HEAD



= WOOD / GLASS THICKNESS



= PAN HEAD



= STANDARD HINGE



= HOLE DIAMETER



= FLANGE HEAD



= KIMANA HINGE



= DIAMETER



= FLAT HEAD



= FLAP HINGE



= LENGTH



= TRILOBULAR SCREW



= WITH SPRING



= HEIGHT



= SELF-TAPPING SCREW



= WITHOUT SPRING



= RIGHT VERSION



= EURO THREAD



= REVERSED SPRING



= LEFT VERSION



= METRIC THREAD



= PRE-INSERTED SCREW



= FOR ROUND TUBE



= PCS. PER PAD



= PRE-INSERTED SCREW AND SPREADING BUSH



= FOR OVAL TUBE



= CUT ON REQUEST



= WITH BUFFER



= SELF ADHESIVE



= WITH MAGNET



= WITH FLANGE

MATERIALS

ZA = Zinc Alloy	ST = Steel	HSS = High Speed Steel	BR = Brass	ABS = Acrylonitrile Butadiene Styrene
ZAnk = Nickel-plated Zinc Alloy	STzk = Zinc-plated Steel	AL = Aluminium	WD = Wood	EVA = Ethylene Vinyl Acetate

EP = **ENGINEERING PLASTIC**

+ **EP** = other engineering plastic available on request

SR = **SOFT RUBBER**

+ **SR** = other soft rubber available on request

EPn = Natural Engineering Plastic	EPc = Clear Engineering Plastic	SRn = Natural Soft Rubber
EPw = White Engineering Plastic	EPg = Grey Engineering Plastic	SRw = White Soft Rubber
EPwg = Water Green Engineering Plastic		SRb = Black Soft Rubber

FINISHES

+  = OTHER FINISHES AVAILABLE ON REQUEST

PART. NO	FINISHES	PART. NO	FINISHES	PART. NO	FINISHES
AA	Natural	JB	Bright Aluminium	PZ	Beech
AB	White	JC	Aluminium - Chrome	QA	Maple
AC	Opal White	JD	Matt Aluminium	QB	Walnut
AE	White 9010	JE	Satin-finished Aluminium	WA	Bronzed
AK	Champagne	JF	Aluminium - Brass	WI	Burnished
AL	Ivory	JG	Aluminium 5	XD	Satin-finished Steel
EA	Black	JL	Aluminium PE 11	YA	Nickel-plated
EB	Glossy Black	JM	Aluminium RAL 9006	YB	Bright Nickel-plated
EC	Matt Black	KA	Chrome	YC	Matt Nickel-plated
GR	Raw	KB	Bright Chrome	YD	Satin-finished Nickel-plated
HA	Brass-Plated	KC	Matt Chrome	ZA	Zinc alloy
HH	Tropicalized	MA	Brown	ZN	Zinc-plated
HL	Raw Brass	MB	Light Brown 1	ZQ	Bright Gold
IA	Grey	NN	Metallic Beige	ZY	Titanium
IB	Metallic Grey	NO	Beige	ZZ	Clear
IF	Middle Grey	OA	Oak	00	Insignificant finish
IJ	Light Grey	OZ	Ash		
IL	Grey 20	PA	Light Ash		
JA	Aluminium	PY	Cherry		



ATACAMA J

ATACAMA J is the new leveller to align heavy duty wardrobes, bookcases and modular furniture with a connecting system built into. Suitable for 60mm plinths. It is fixed on the furniture bottom through two housings, in order to provide an easier and more stable installation.

The **ATACAMA J** installation is very easy thanks to a M6 pin that can be screwed into an insert nut inserted in the furniture side. A lateral pin slots into the furniture side to achieve a structural connection, as well as an equal load distribution over the furniture side and base. Finally, two screws secure **ATACAMA J** to the furniture bottom. By using a rounded key with hexagonal bit or a cordless driver-drill with an appropriate drill bit, a Ø 8mm through hole in the furniture

bottom, allows you to connect the bottom to the side first and then, by lowering the hexagonal bit of the key, to adjust the height of the construction without interfering with the side connection.

The zinc alloy die-cast foot, is provided with an independent engineering plastic glide in order to make the adjustment easier and to prevent the scratching of the floor too.

Capable of supporting a 175kg load each.

25mm adjustment

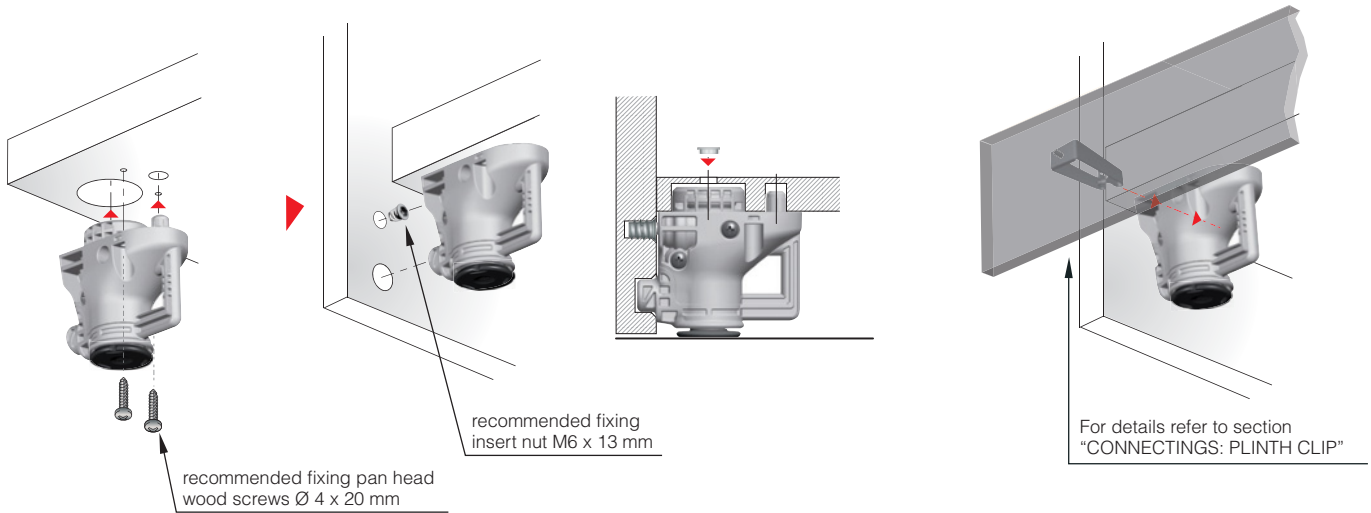
Zinc alloy, Steel and Engineering plastic



175 Kg per piece

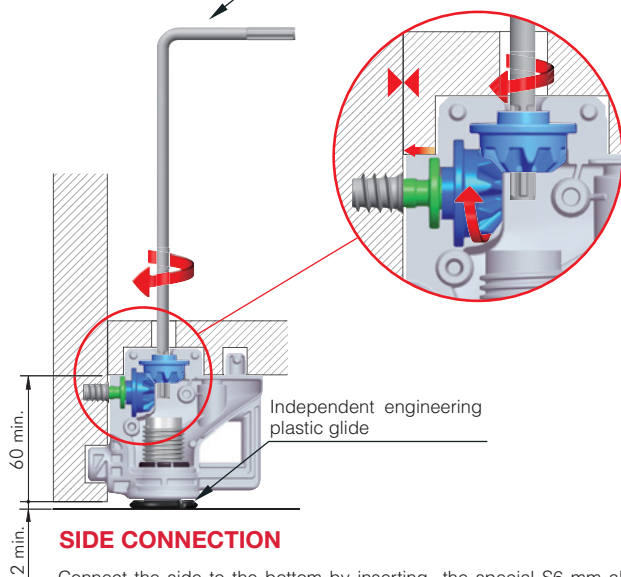


Tested in accordance with CATAS procedures



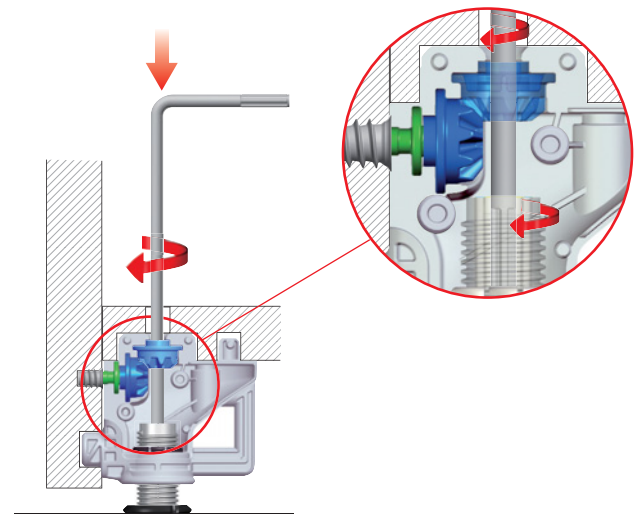
STEP 1

Special S6 mm allen wrench



Connect the side to the bottom by inserting the special S6 mm allen wrench with hexagonal bit into the through hole, until it fits into the first cavity.

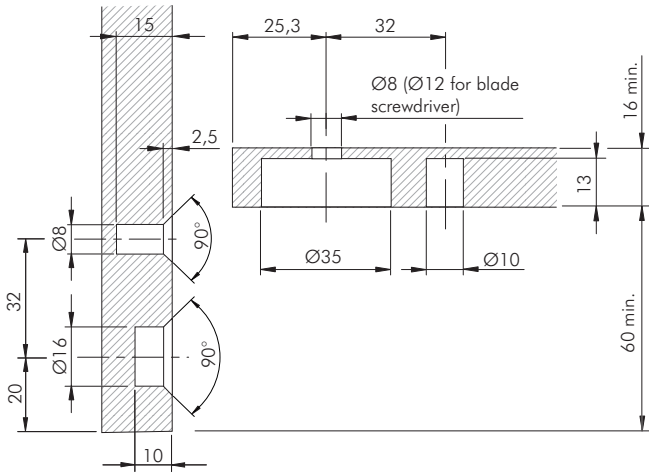
STEP 2



Adjust the height of the construction by lowering the hexagonal bit until it fits the cavity of the die-cast foot.



ATACAMA J : APPLICATION FOR SIDE PANEL

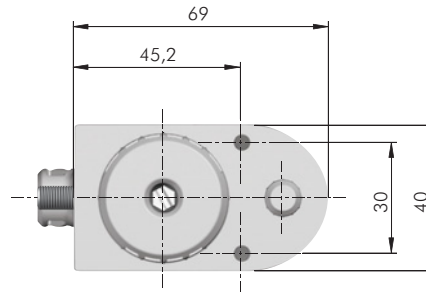
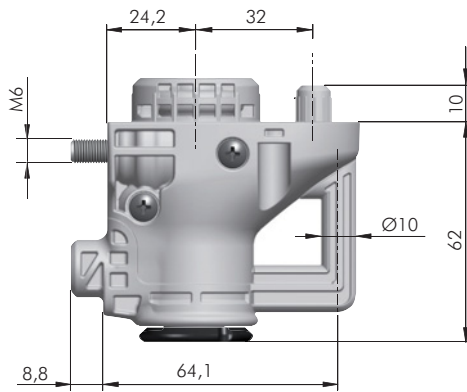


= special S6 mm
 = 70 pcs.

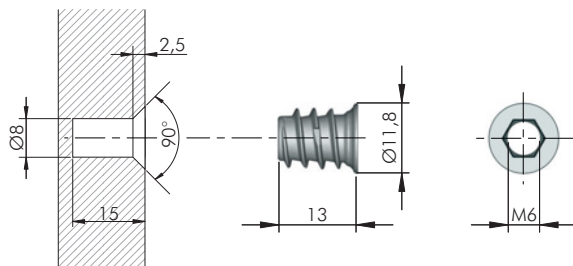
123

 31701000J

Special allen wrench is required part.no 31702000ZN.



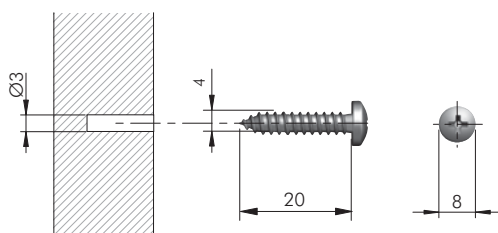
ATACAMA J FIXING ACCESSORIES FOR SIDE PANEL



= Ø 8 mm +
 = M6 = 6
 = 5000 pcs.

123

 20102020GR



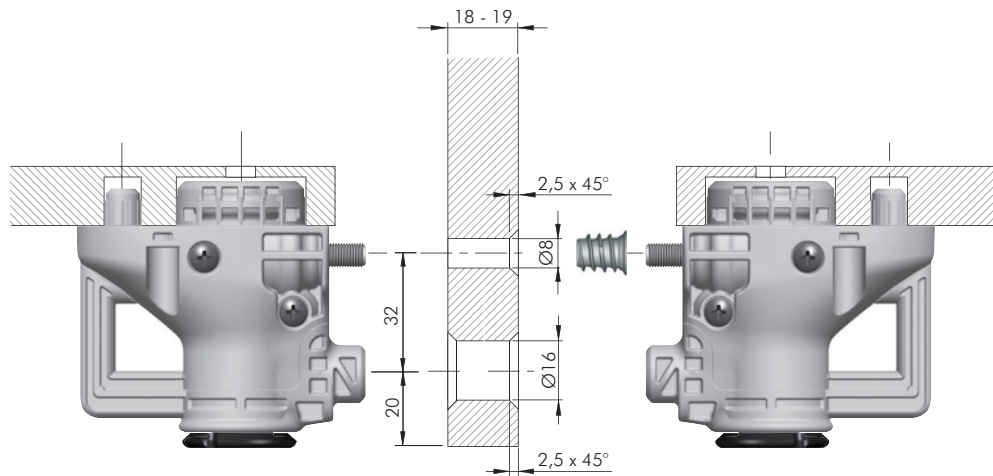
= PZ2 +
 = 500 pcs.

123

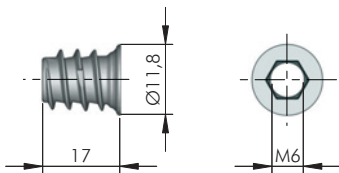
 60103270ZN



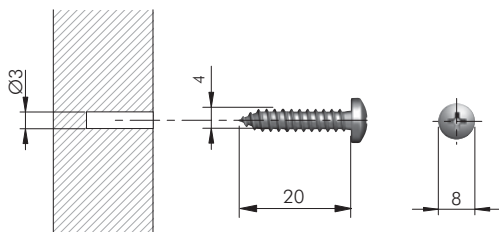
ATACAMA J: APPLICATION FOR PARTITION 18 - 19 mm THICK



ATACAMA J FIXING ACCESSORIES FOR PARTITION 18 - 19 mm THICK



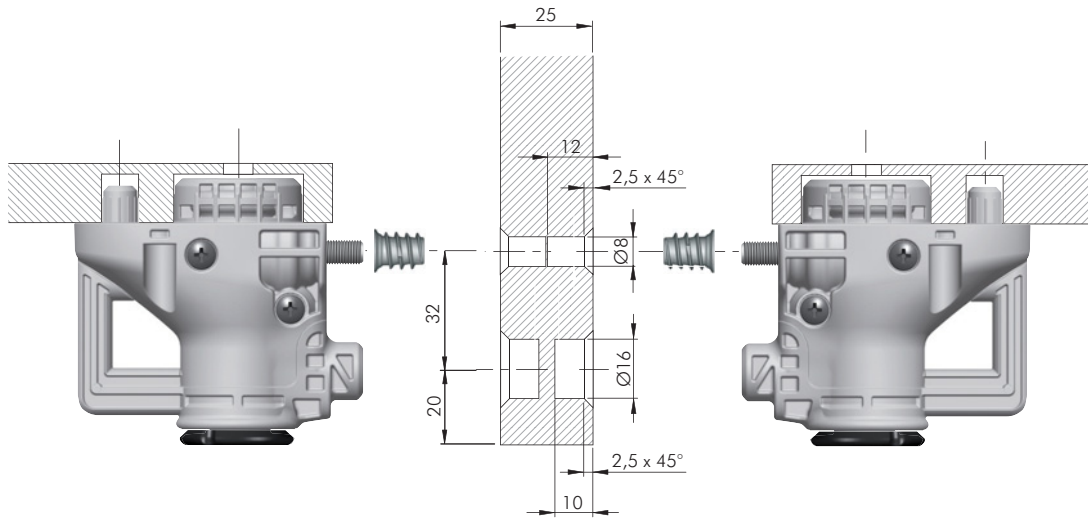
	= Ø 8 mm	+	
	= M6		
	ZA		= 5000 pcs.
	20102040GR		



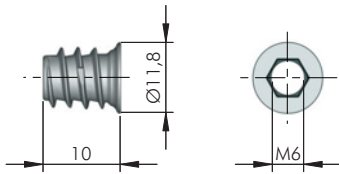
			= PZ2	+	
	ST		= 500 pcs.		
	60103270ZN				



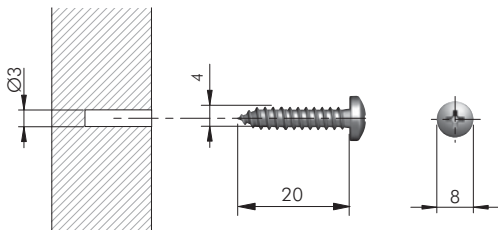
ATACAMA J: APPLICATION FOR PARTITION 25 mm THICK



ATACAMA J FIXING ACCESSORIES FOR PARTITION 25 mm THICK



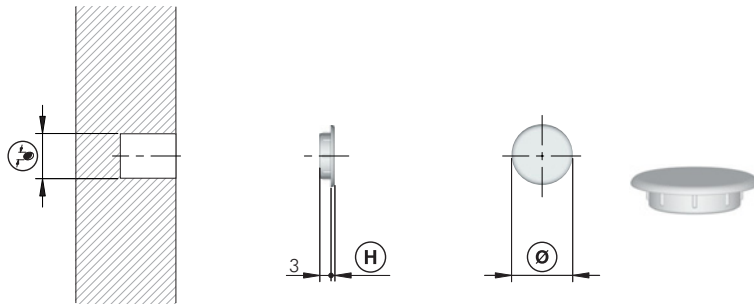
	= Ø 8 mm		
	= M6		= 6
			= 5000 pcs.
20102010GR			



	= PZ2		
			= 500 pcs.
60103270ZN			



ATACAMA J ACCESSORIES



= Ø 8, Ø 12 mm



EP



23002010AB

Ø 8

Ø 11

1

5000

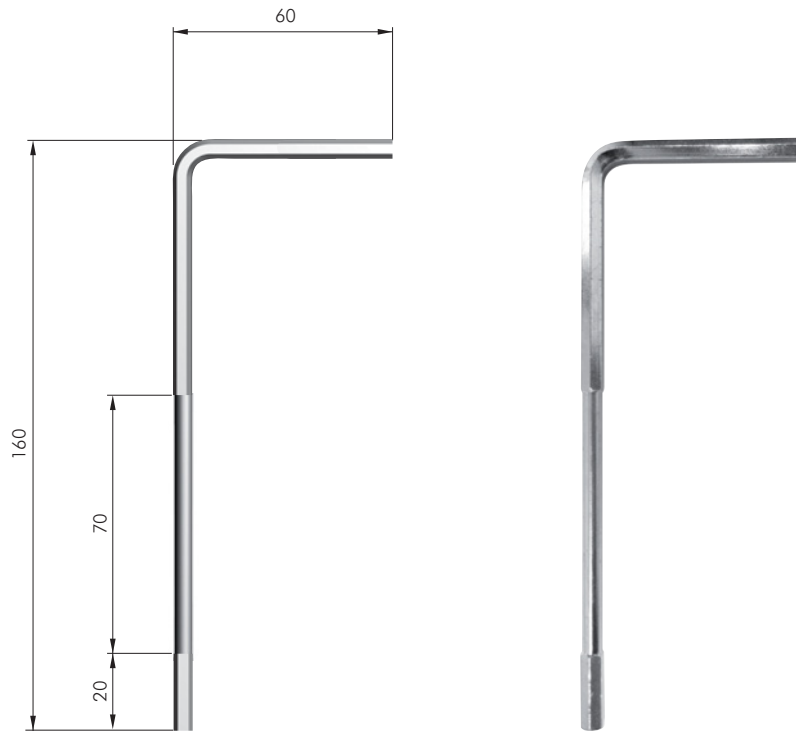
23002030AB

Ø 12

Ø 15

1

5000



= special S6 mm

ST

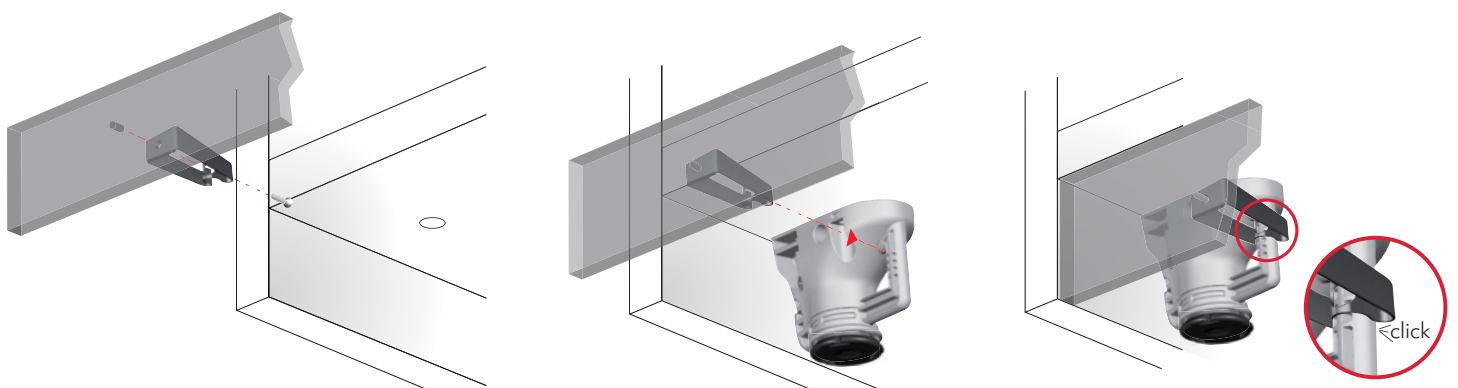
= on request



31702000ZN

PLINTH CLIP FOR ATACAMA J

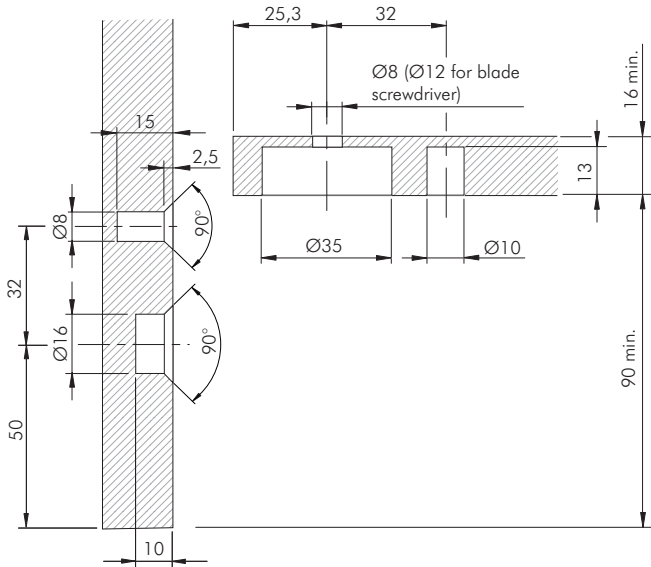
- For details refer to section "CONNECTINGS: PLINTH CLIP"





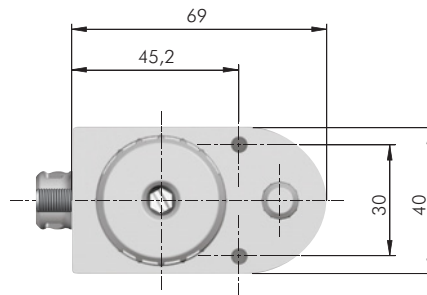
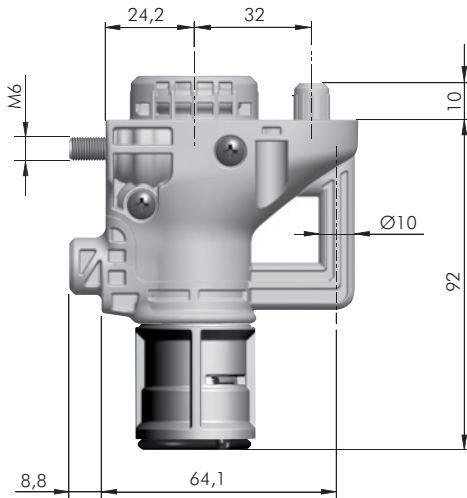
OPTIONAL VERSION

ATACAMA J WITH HEIGHT ADAPTER



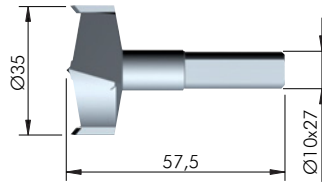
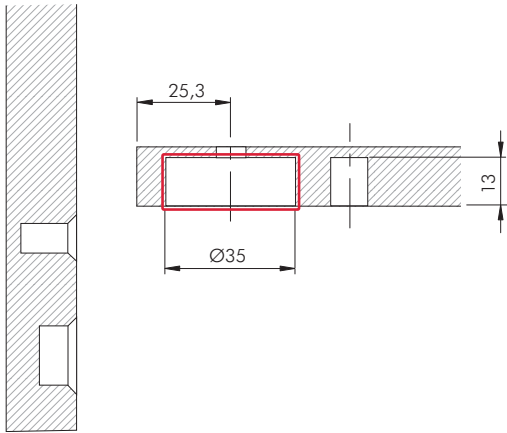
	= special S6 mm		= 50 pcs.
ZA	EP	ST	
31703000IJ			

Special allen wrench is required part.no 31702000ZN.

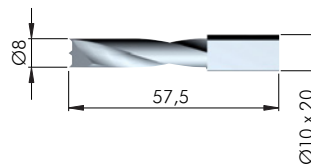
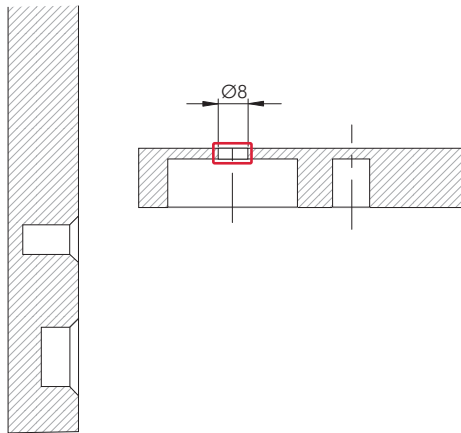




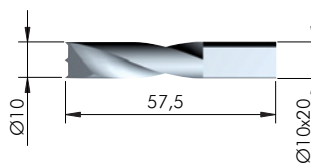
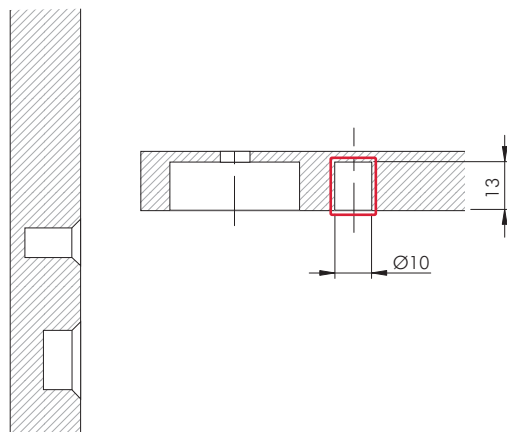
DRILL BIT FOR ATACAMA J



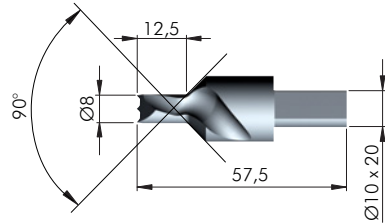
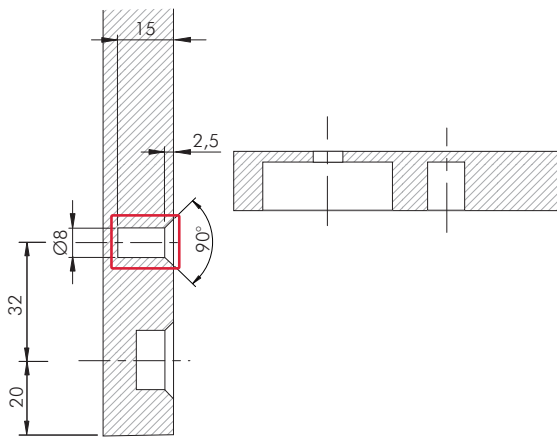
HSS	= on request
3175201000	



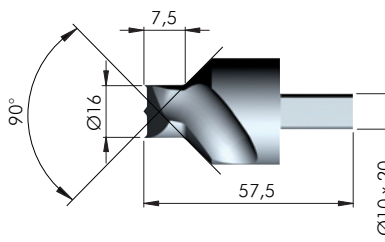
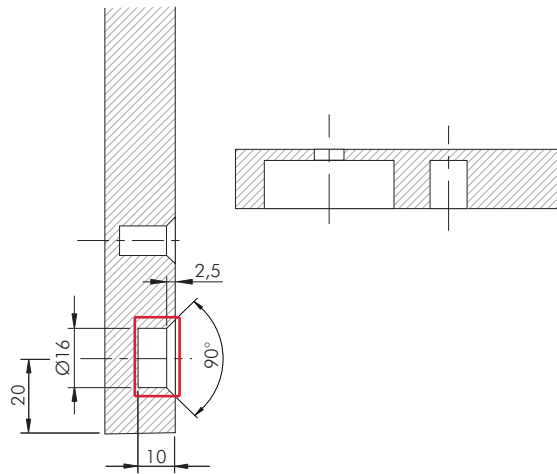
HSS	= on request
1145202000	



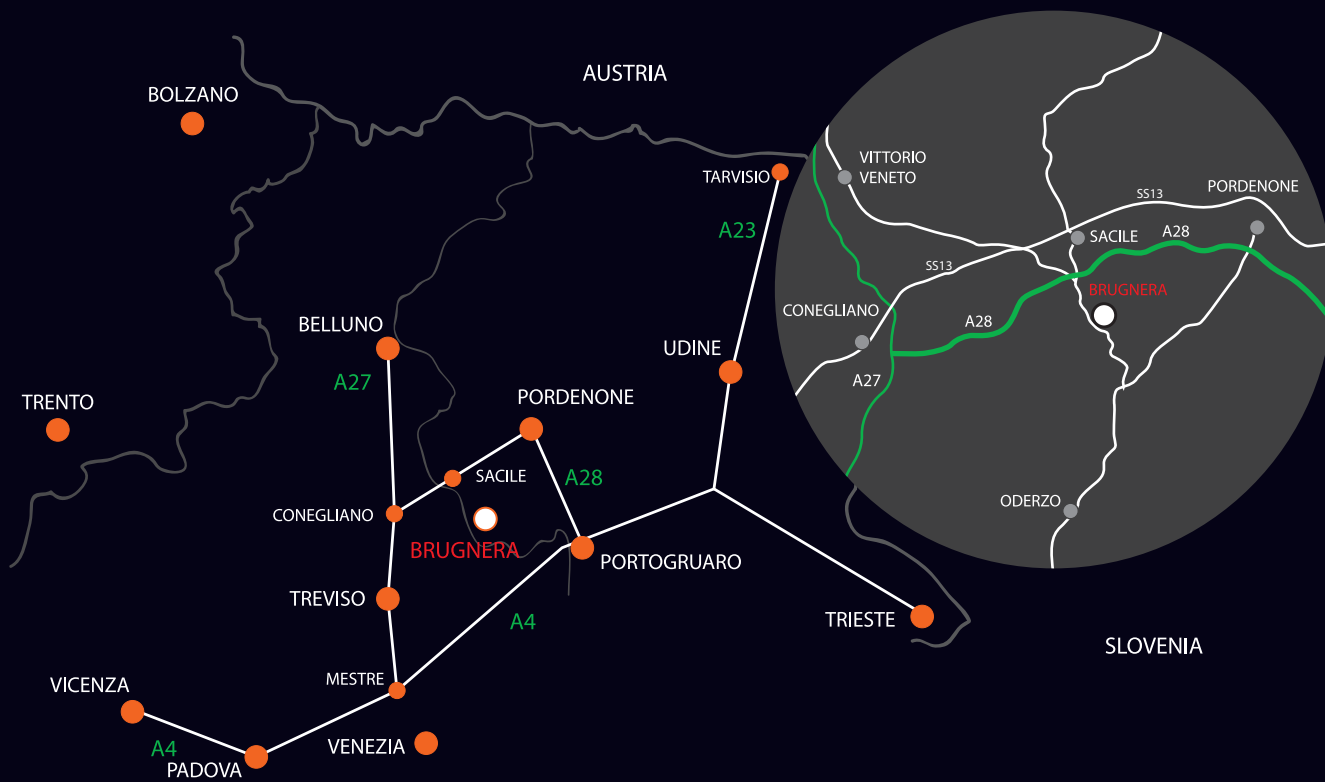
HSS	= on request
3175204000	



HSS	= on request
3175205000	



HSS	= on request
3175202000	



www.italianaferramenta.com