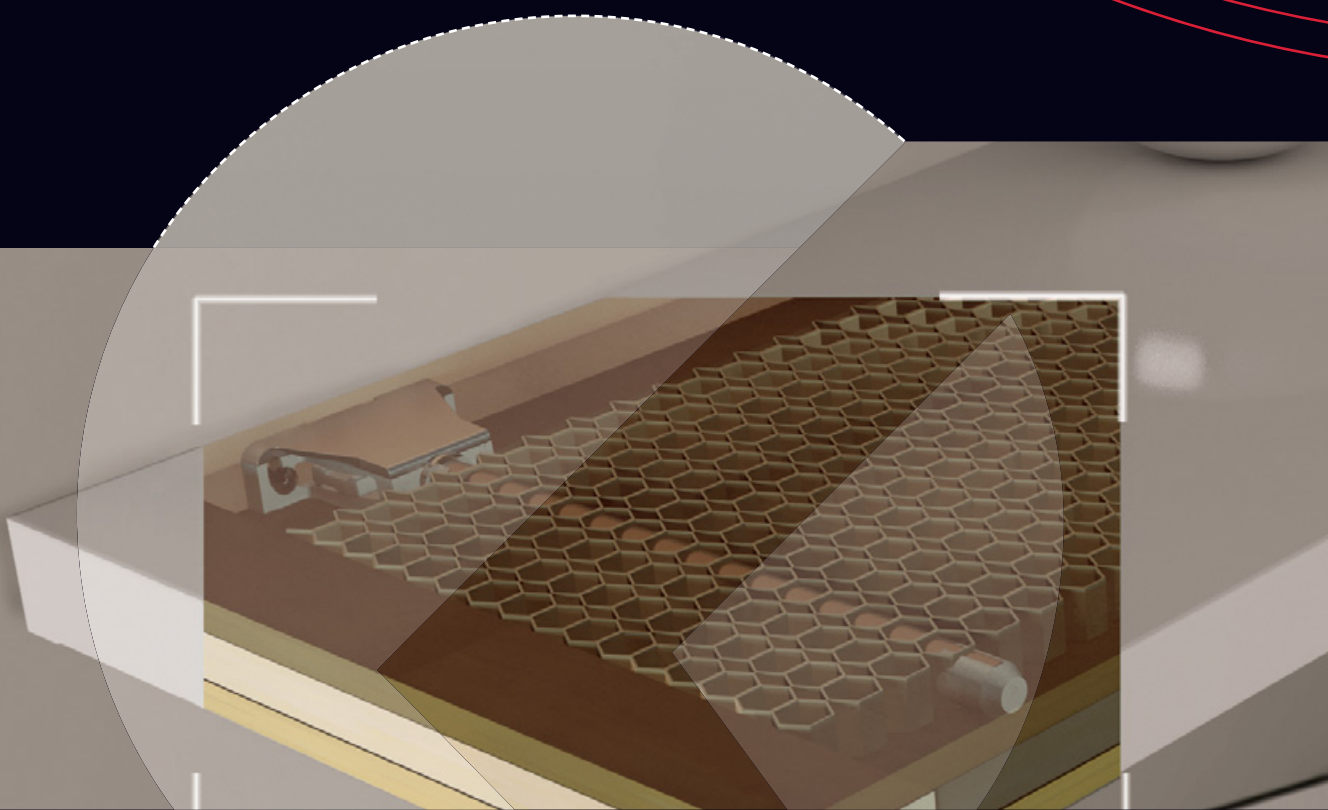
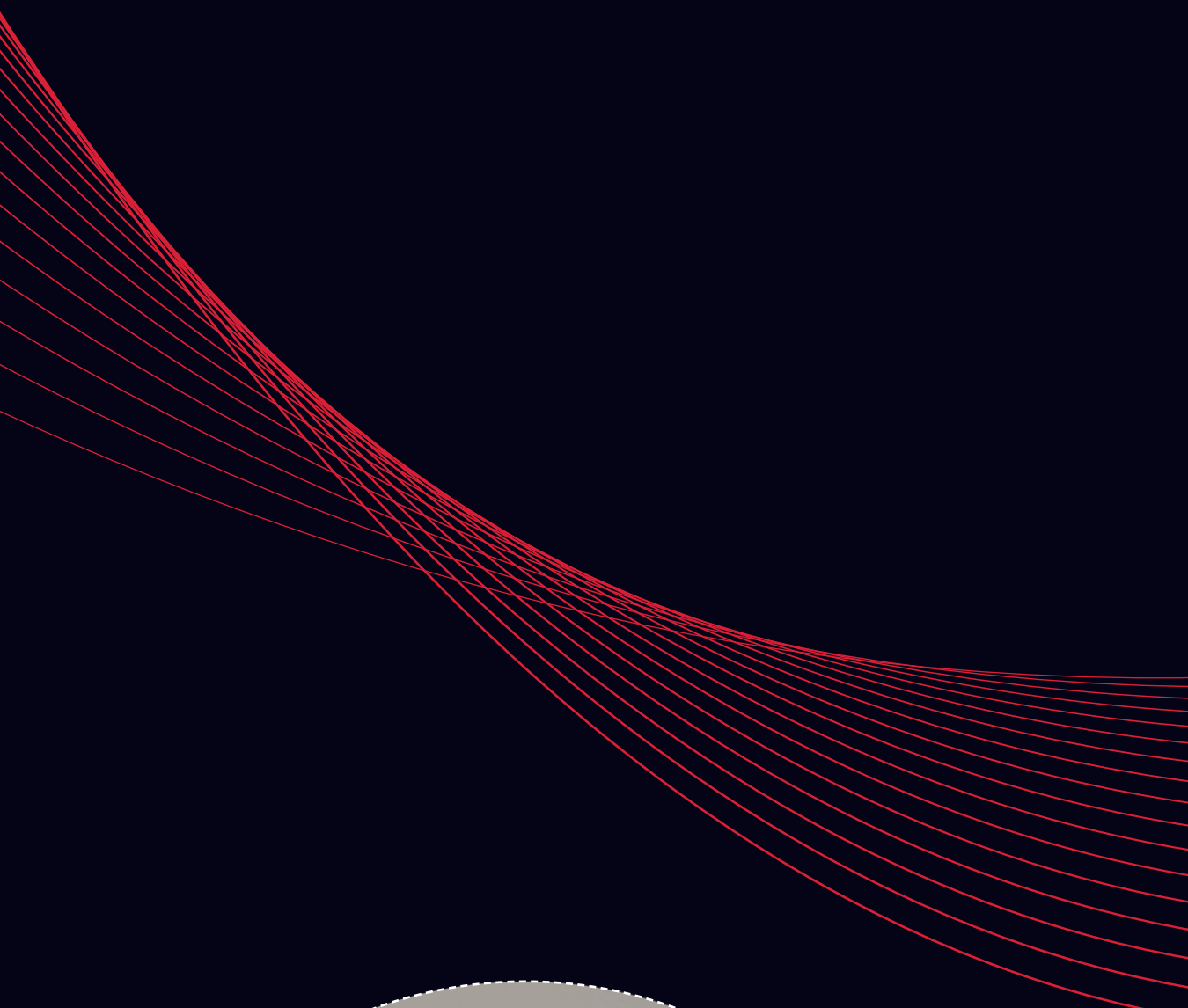


TRIADE XXL

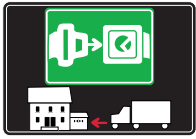
WOOD AND
GLASS
SHELVING
SYSTEMS





SYMBOLS AND FINISHES LEGEND

SYMBOLS



= SHELF SAFELY LOCKED DURING TRANSPORTATION AND AT HOME.



= ANTI-TURNOVER LOCKING SYSTEM



= NORMS / PATENTS



= PHILLIPS / POZIDRIV



= NEWTON



= PART.NO



= HEXAGONAL SOCKET



= FRICTION



= PCS. PER PACKAGE



= BLADE SLOT



= AUTOMATIC



= CAPACITY LOADING



= COUNTERSUNK HEAD



= WOOD / GLASS THICKNESS



= PAN HEAD



= STANDARD HINGE



= HOLE DIAMETER



= FLANGE HEAD



= KIMANA HINGE



= DIAMETER



= FLAT HEAD



= FLAP HINGE



= LENGTH



= TRILOBULAR SCREW



= WITH SPRING



= HEIGHT



= SELF-TAPPING SCREW



= WITHOUT SPRING



= RIGHT VERSION



= EURO THREAD



= REVERSED SPRING



= LEFT VERSION



= METRIC THREAD



= FOR ROUND TUBE



= PCS. PER PAD



= PRE-INSERTED SCREW AND SPREADING BUSH



= FOR OVAL TUBE



= CUT ON REQUEST



= WITH BUFFER



= WITH FLANGE



= SELF ADHESIVE



= WITH MAGNET

MATERIALS

ZA = Zinc Alloy	ST = Steel	HSS = High Speed Steel	BR = Brass	ABS = Acrylonitrile Butadiene Styrene
ZAnk = Nickel-plated Zinc Alloy	STzk = Zinc-plated Steel	AL = Aluminium	WD = Wood	EVA = Ethylene Vinyl Acetate

EP = **ENGINEERING PLASTIC**

+ **EP** = other engineering plastic available on request

SR = **SOFT RUBBER**

+ **SR** = other soft rubber available on request

EPn = Natural Engineering Plastic	EPc = Clear Engineering Plastic	SRn = Natural Soft Rubber
EPw = White Engineering Plastic	EPg = Grey Engineering Plastic	SRw = White Soft Rubber
EPwg = Water Green Engineering Plastic		SRb = Black Soft Rubber

FINISHES

+  = OTHER FINISHES AVAILABLE ON REQUEST

PART. NO	FINISHES	PART. NO	FINISHES	PART. NO	FINISHES
AA	Natural	JB	Bright Aluminium	PZ	Beech
AB	White	JC	Aluminium - Chrome	QA	Maple
AC	Opal White	JD	Matt Aluminium	QB	Walnut
AE	White 9010	JE	Satin-finished Aluminium	WA	Bronzed
AK	Champagne	JF	Aluminium - Brass	WI	Burnished
AL	Ivory	JG	Aluminium 5	XD	Satin-finished Steel
EA	Black	JL	Aluminium PE 11	YA	Nickel-plated
EB	Glossy Black	JM	Aluminium RAL 9006	YB	Bright Nickel-plated
EC	Matt Black	KA	Chrome	YC	Matt Nickel-plated
GR	Raw	KB	Bright Chrome	YD	Satin-finished Nickel-plated
HA	Brass-Plated	KC	Matt Chrome	ZA	Zinc alloy
HH	Tropicalized	MA	Brown	ZN	Zinc-plated
HL	Raw Brass	MB	Light Brown 1	ZQ	Bright Gold
IA	Grey	NN	Metallic Beige	ZY	Titanium
IB	Metallic Grey	NO	Beige	ZZ	Clear
IF	Middle Grey	OA	Oak	00	Insignificant finish
IJ	Light Grey	OZ	Ash		
IL	Grey 20	PA	Light Ash		
JA	Aluminium	PY	Cherry		

TRIADE XXL

TRIADE XXL is the concealed mounting bracket for honeycomb shelves minimum 40mm thick. It has been conceived to simplify the shelf installation.

It is provided with three independent adjustments:

1) **VERTICAL**

Before installing the shelf, the mounting brackets can be adjusted in height and (vertically) aligned through the slots.

2) **HORIZONTAL**

While placing the shelf in position, the supporting pins can be slid horizontally.

3) **INCLINATION**

When the shelf is partially inserted, the shelf angle can be adjusted front to back by turning the supporting pins with a 12mm open-ended wrench.

The capacity loading is 20Kg each (shelf weight included) for a shelf max 400mm deep.

Shelf minimum depth: 300mm

Zinc alloy and steel

40 mm min.



20 kg for each shelf support
for shelf 400 mm deep

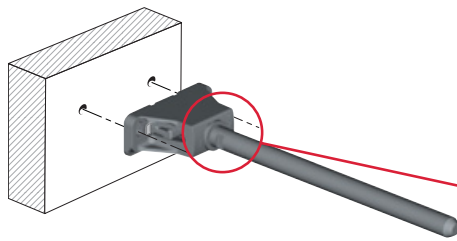


PAT. PENDING



INSTALLATION AND ADJUSTMENTS

WOOD PANEL

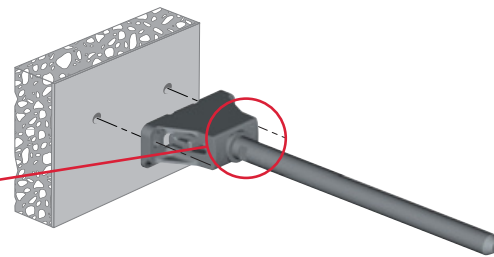


Recommended fixing pan head screw type - head Ø 5 mm max.

VERY IMPORTANT

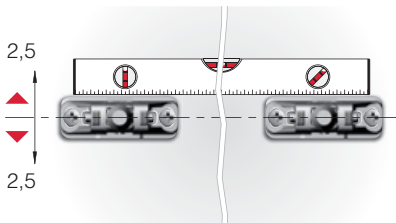
Triade XXL has to be installed with the arrow facing upwards.

SOLID AND PLASTERBOARD PANEL

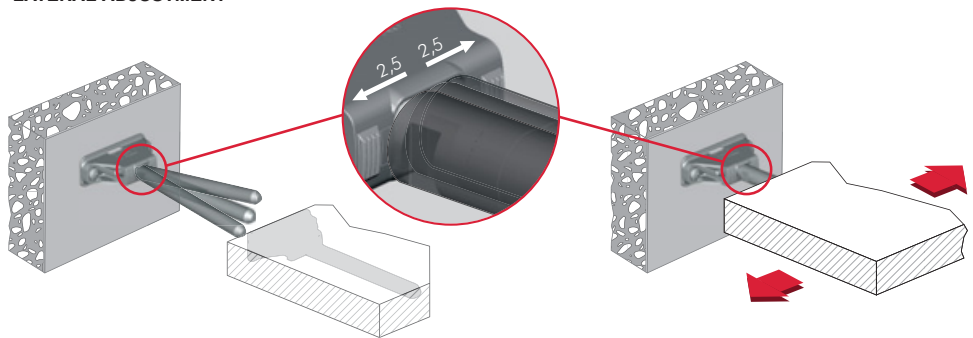


It is the responsibility of the customer:
- to ensure the wall is of a suitable quality to hold the shelf fixing in place.
- to use the proper hardware fittings according to the construction of the wall.
For more specific information, please refer to the WARNINGS section at the end of the catalogue.

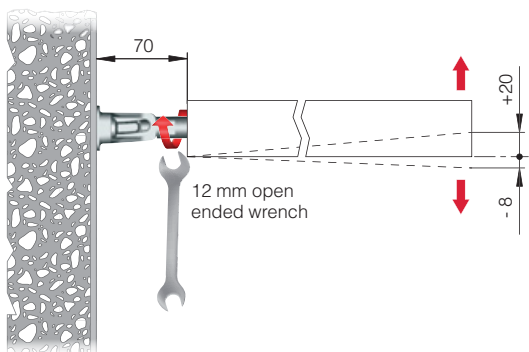
BRACKET ALIGNMENT



LATERAL ADJUSTMENT

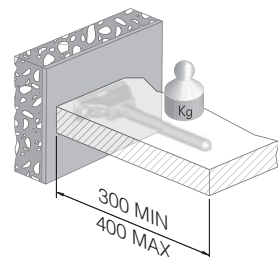
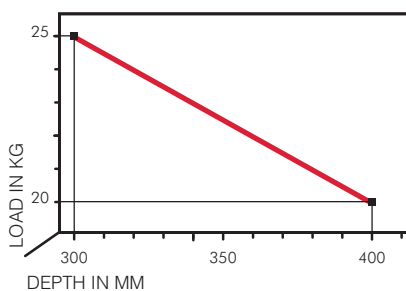


INCLINATION ADJUSTMENT



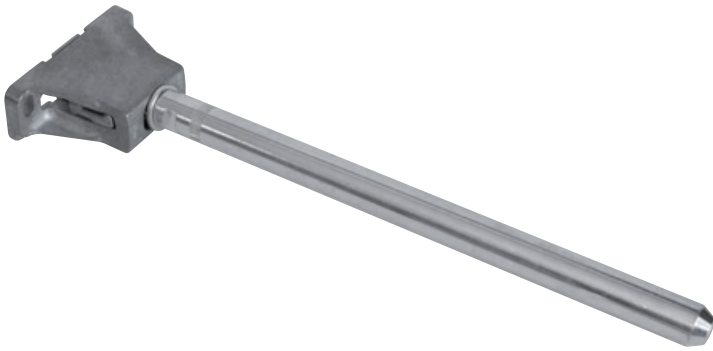
COMBINATION SHELF LOAD AND SHELF DEPTH

(The figures refer to 1 shelf support)

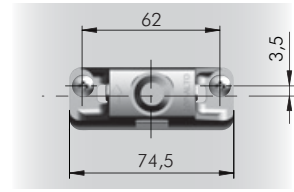
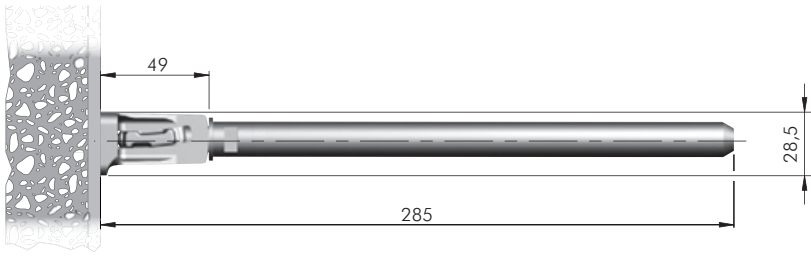


+ shelf weight = 20 kg MAX
for each shelf support

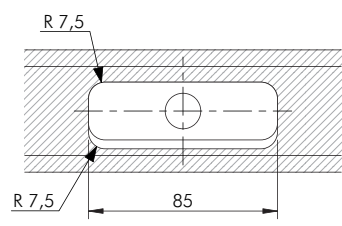
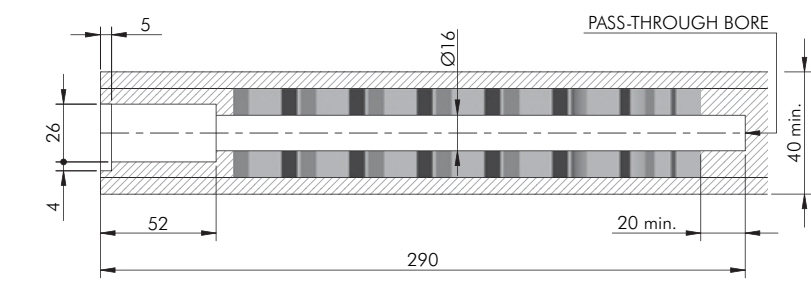
For installation details refer to "APPLICATION FOR ALL TRIADE VERSIONS"



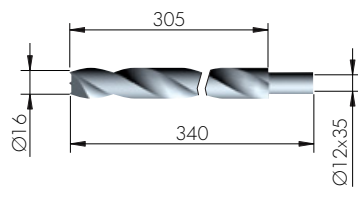
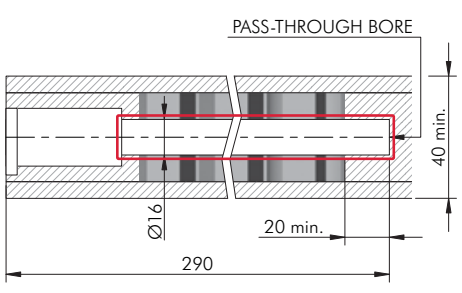
= PZ2 = open ended wrench 12 mm
 = 25 pcs.
 |
1621701000



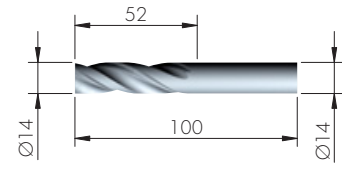
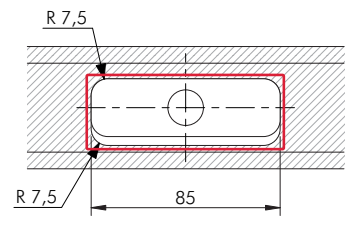
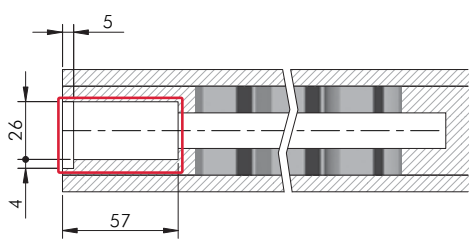
VERY IMPORTANT
Centre of the hole is shifted 3,5 mm upwards. Please keep in mind when levelling the shelf.



DRILL BIT FOR TRIADE XXL



 = on request
 |
1621456000

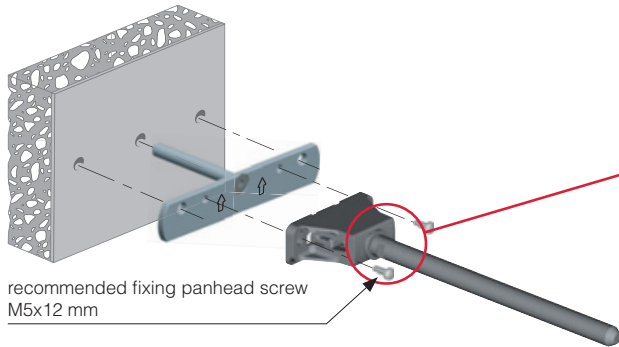


 = on request
 |
1621454000

TRIADE XXL AND BRACKET

INSTALLATION

SOLID AND PLASTERBOARD PANEL



recommended fixing panhead screw
M5x12 mm

VERY IMPORTANT

Triade XXL has to be installed
with the arrow facing upwards.

It is the responsibility of the customer:

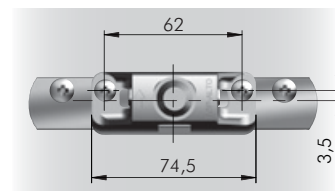
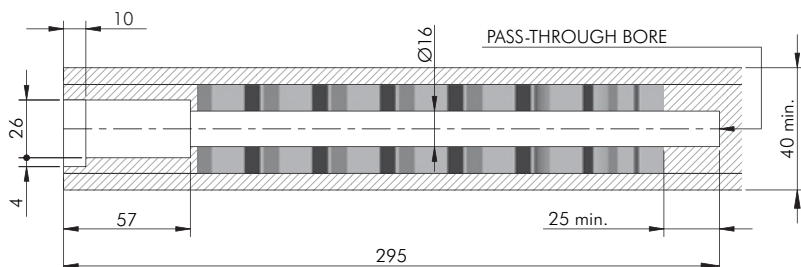
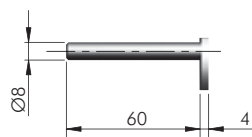
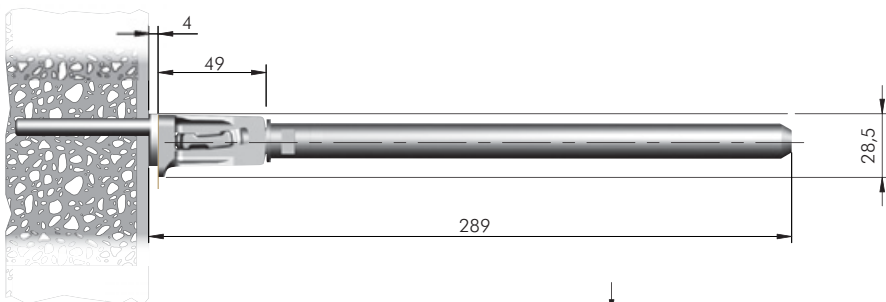
- to ensure the wall is of a suitable quality to hold the shelf fixing in place.
- to use the proper hardware fittings according to the construction of the wall.

For more specific information, please refer to the WARNINGS section at the end of the catalogue.

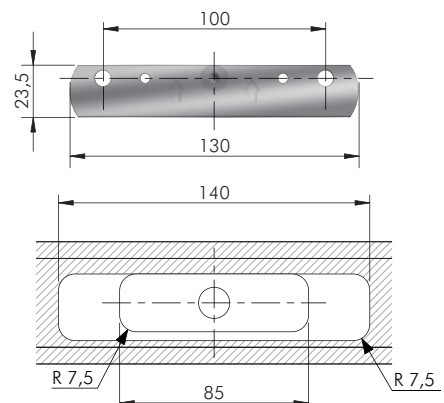


= PZ2	= open ended wrench 12 mm
	= 25 pcs.
123	
1621701000	

= M5	
	= 100 pcs.
123	
16215030ZN	

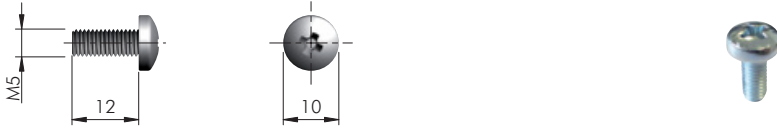


VERY IMPORTANT
Centre of the hole
is shifted 3,5 mm
upwards.
Please keep in mind
when levelling the
shelf.



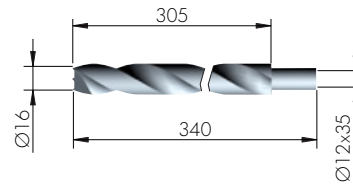
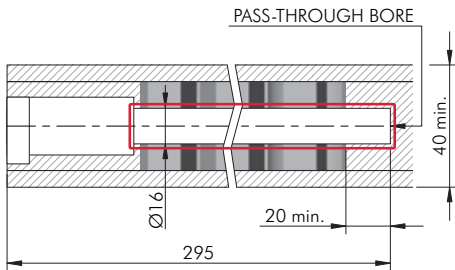


TRIADE MAXI BRACKET FIXING ACCESSORY

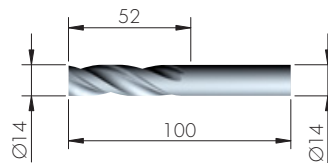
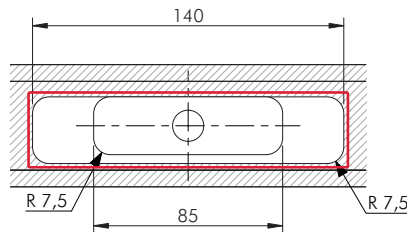
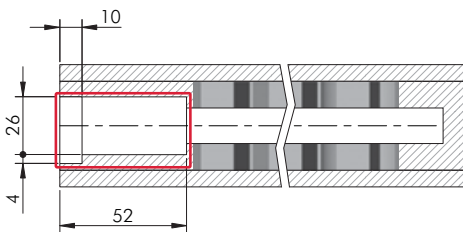


= M5	= PZ2	
ST		= 1000 pcs.
123 60334030ZN		

DRILL BIT FOR TRIADE XXL AND BRACKET



HSS	= on request
123 1621456000	

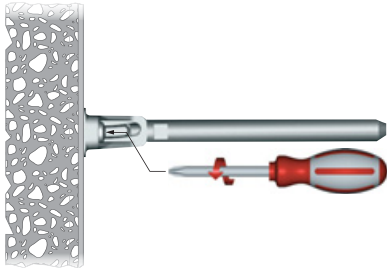


HSS	= on request
123 1621454000	

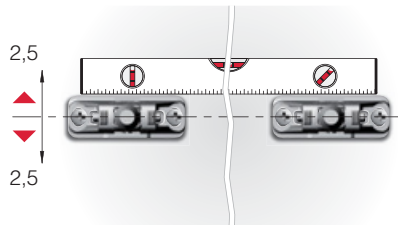
APPLICATION FOR ALL TRIADE VERSIONS

VERTICAL ADJUSTMENTS

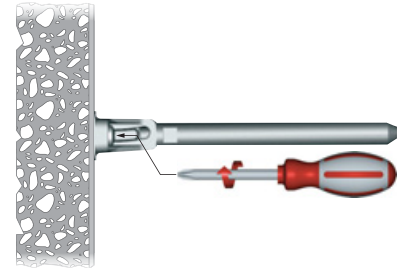
RELEASE THE FIXING SCREWS



ALIGN BRACKETS VERTICALLY ACCORDINGLY

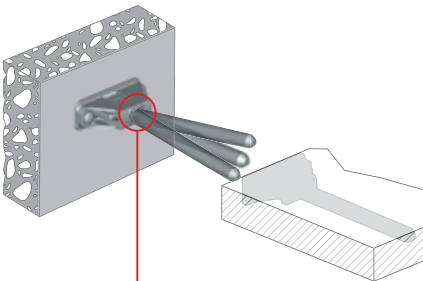


TIGHT THE FIXING SCREWS

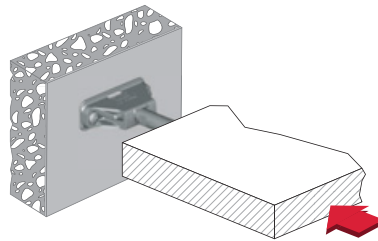


SHELF INSERTING AND LATERAL ADJUSTMENT

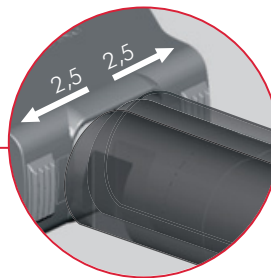
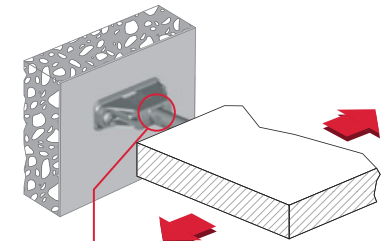
TILT THE SHELF TO MATCH BOTH SUPPORTING PINS AND SHELF HOUSINGS



INSERT PARTIALLY THE SHELF

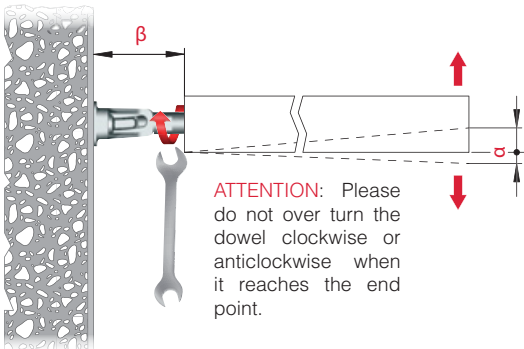


ADJUST THE SHELF Laterally ACCORDING TO THE APPLICATION (i.e. MULTI-SHELF COMPOSITION)



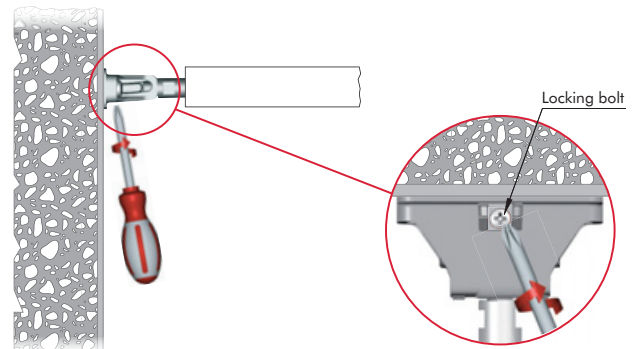
INCLINATION ADJUSTMENTS

TURN CLOCKWISE THE SUPPORTING PIN WITH A 10 - 12 mm OPEN-ENDED WRENCH TO ADJUST THE SHELF ANGLE FRONT TO BACK ACCORDINGLY



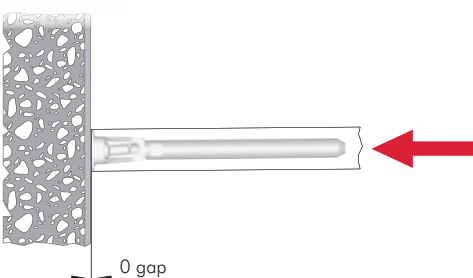
MODEL	β (mm)	α (mm)
TRIADE MINI	approx.45	-6 +13
TRIADE	approx.45	-6 +13
TRIADE MAXI	approx.70	-8 +20
TRIADE XXL	approx.70	-8 +20

SCREW THE LOCKING BOLT TO BLOCK THE PIN



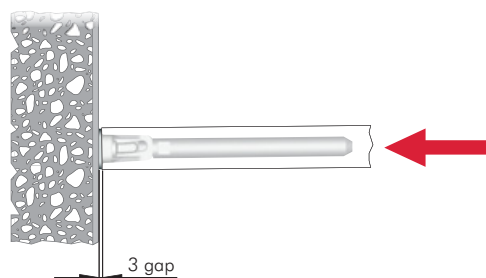
SHELF INSERTING FOR ALL TRIADE MODELS

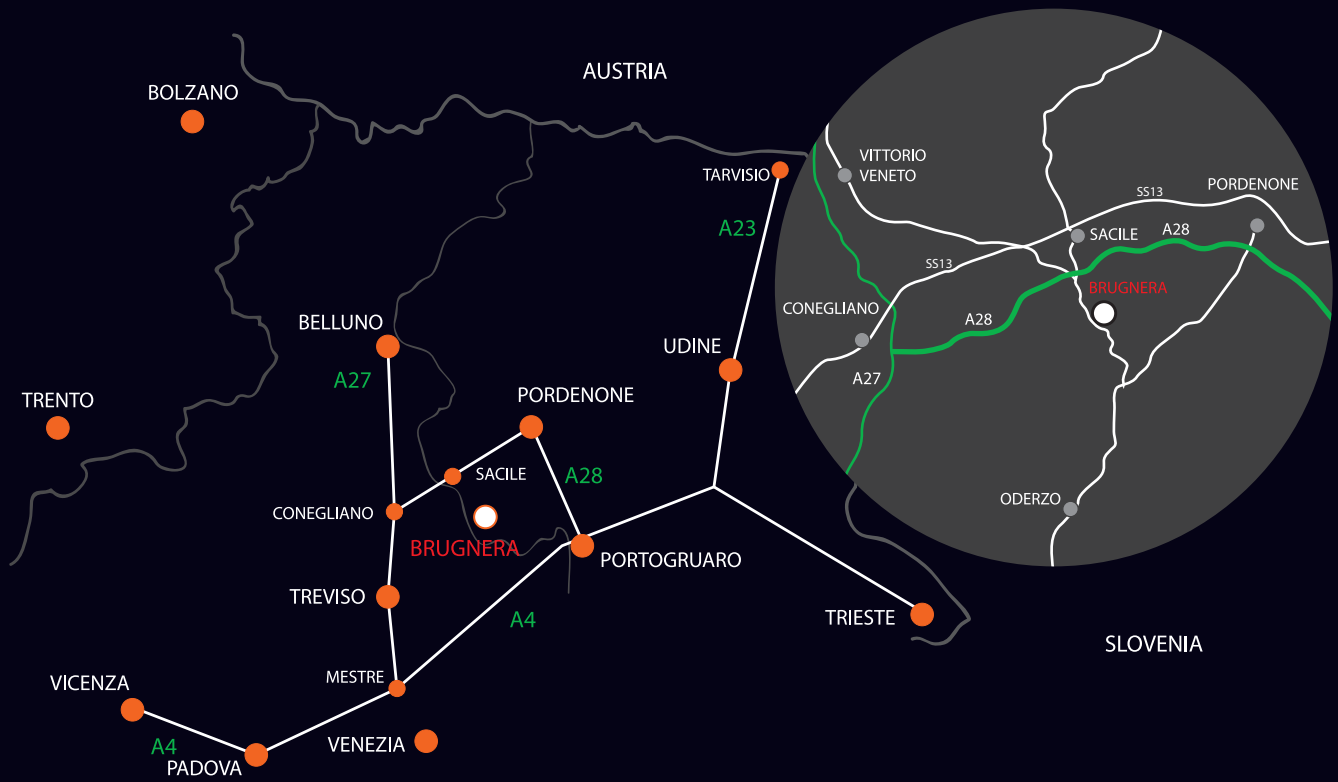
PUSH THE SHELF AGAINST THE WALL UNTIL THE END



SHELF INSERTING FOR TRIADE MODEL ONLY, WITH DRILLING PLAN FOR SHELVES 25-29 mm THICK

PUSH THE SHELF AGAINST THE WALL UNTIL THE END





www.italianaferramenta.com