

FLUSH SLIDING DOOR SYSTEM MFU1200 Two-way Damper

INSTRUCTION



[Black Parts]



	MFU1200-40	MFU1200-70
Width	800 - 1200 mm	
Height	Max. 2700 mm	
Thickness	30 - 40 mm	
Weight	20 - 40 kg	40 - 70 kg
Adjustment	Depth : ± 4 mm	
	Height : ± 4 mm	

Flush door system with 2-way damper, for doors up to 70kg.

- Doors will be flush with walls when closed.
- Door can be pushed open and no handle is necessary on the door front.
- The two-way damper allows doors to be both opened and closed softly.
- Limited number of parts for easy installation.
- Improved adjustments for a perfect result.
- No bottom rail or floor groove is necessary.

[Application]

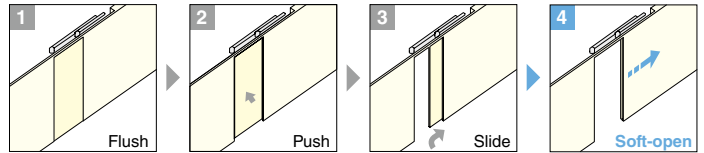
- Walk-in closets, hidden rooms, shop storage space.

[Remarks]

- The bottom bracket protrude from the door bottom. Make sure to leave enough clearance when opening the door.
- Installation positions and door workings have changed from the MFU-1000. Please make sure to download the latest installation instructions.

[Opening Motion]

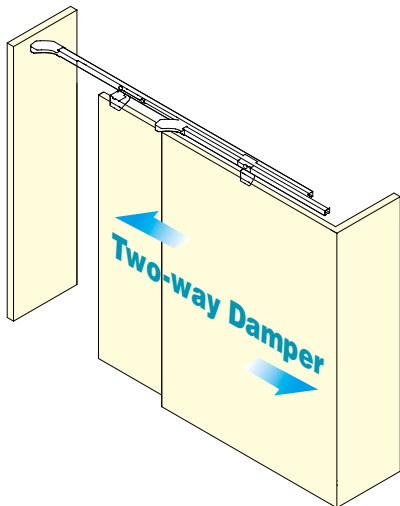
No handle is needed on the door front for opening.



[Video Link]

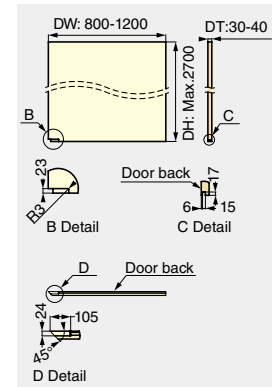
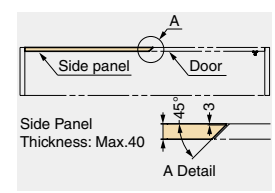
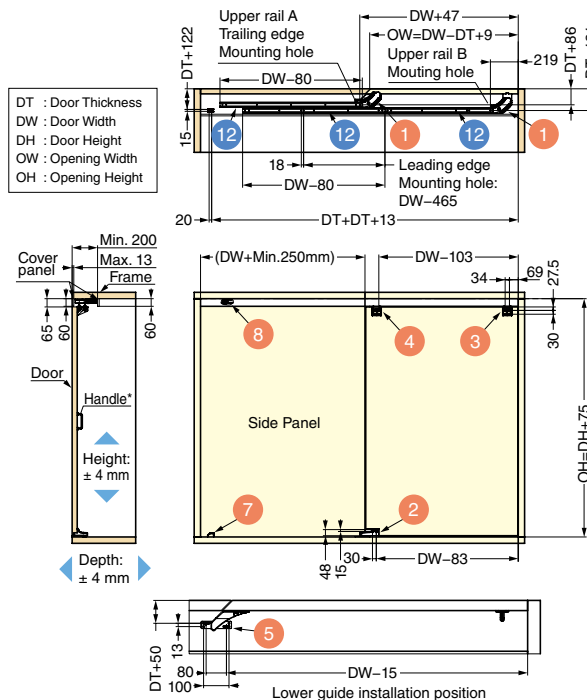


[Two-way Damper]



- Soft open and close.
- 100 mm long damper stroke.
- Light opening and closing force.

[Installation Example]



Circled number represents the part number in the parts table 1. Refer to 1: P.12

* Drawings are for a Left to Right opening (MFU1200-L). Right to Left opening (MFU1200-R) is symmetrically opposed.
* The door cannot be opened from the inside without a handle (not included).